

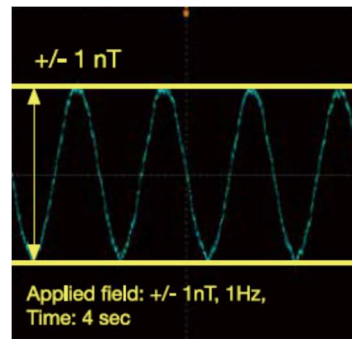
Exhibiting at the 2017 Sensor Expo

Aichi Steel (headquartered in Tokai City, Japan) and its subsidiary Aichi Micro Intelligent will exhibit at the 2017 Sensor Expo to be held from June 27 through 29, 2017 at the San Jose McEnergy Convention Center. Our booth is number 643.

Aichi Steel was the first company to successfully commercialize the MI sensor (based on the Magnetic Impedance effect) technology, and it has seen use as a highly sensitive electronic compass in mobile phones, digital cameras, tablets, laptop PCs and other mobile devices, selling over 100 million pieces since 2002. At the 2017 Sensor Expo, the company will display many of the technologies derived from our expertise in the Magnetic Impedance effect.

<Main Products on Display>

1. **NanoTesla Sensor** is a highly sensitive magnetic sensor that can detect weak magnetic field variations with a noise level of 1 nano tesla. This sensor consists of a one way detecting magnetic head (MI element) and an electric circuit operating the MI element. By restricting the cut-off frequency on the low frequency side to 0.1Hz, this sensor cancels static magnetic fields such as geomagnetism and responds only to moving ferrous objects. This sensor can detect a ferrous particle as small as 1/10mm.



2. **Amorphous Wires** with their non-uniform atomic arrangement are a unique material gaining attention in numerous fields, including magnetic sensors, medical devices and sports equipment. We currently produce two types of wires: Sency, with high sensitivity and superior soft magnetic properties and Bolfur, with high strength and high corrosion resistance.

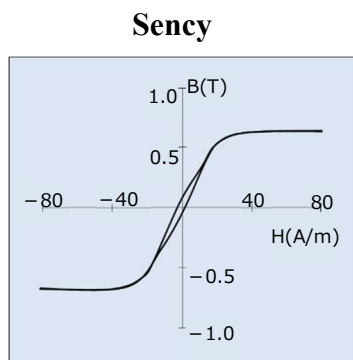


Fig 1. B-H curve

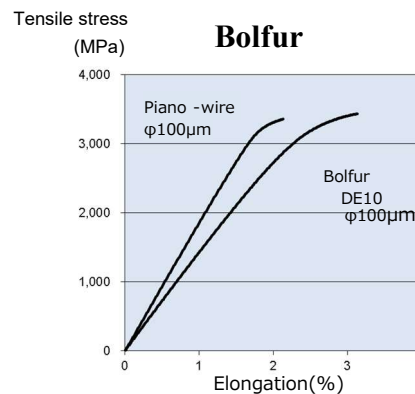
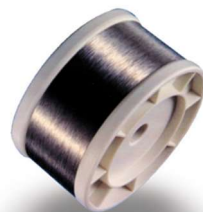


Fig 2. Stress-extension curve

Enquiries: Aichi Steel Corporation, Silicon Valley Office
4300 Stevens Creek Blvd, Suite 203
San Jose, CA 95129
Tel: (408) 243-1466 Email: ami-info@aichi-mi.com

sensors
expo & conference